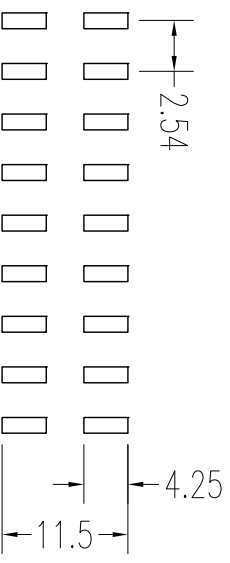
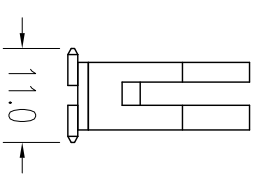
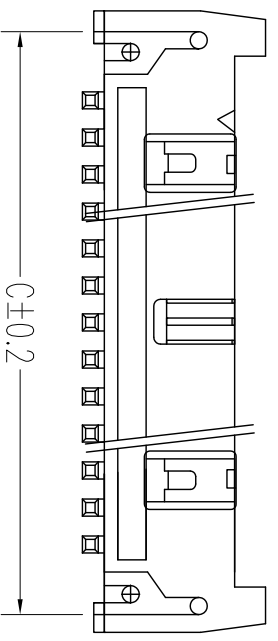
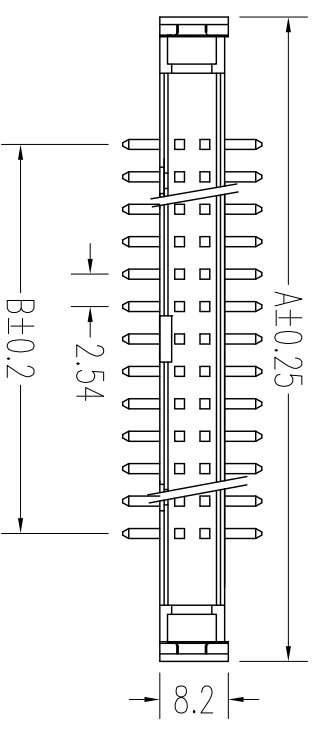


REV.	DESCRIPTION	DATE
A	RELEASE	2012.11.12

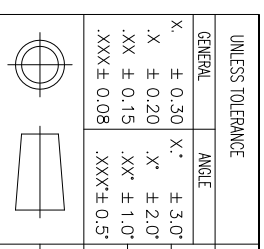
NOTES:

- Insulator Material: PBT, UL 94V-0
- Contact Plating: Tin 80-100U"
- Contact Material: Brass
- Current Rating : 1A AC,DC
- Contact Resistance: 20MΩ Max.
- Dielectric Withstanding: AC 500V
- Insulator Resistance: 1000MΩ Min.
- Operating Temp.: -40°C~+105°C



NUMBER OF POSITIONS	DIMENSION		
	A	B	C
10	32.00	10.16	27.94
14	34.54	12.70	33.02
16	39.62	17.78	35.56
20	44.60	22.86	39.70
24	49.78	27.94	45.72
26	52.32	30.48	48.26
30	57.40	35.56	53.34
34	62.48	40.64	58.42
40	70.10	48.26	66.04
50	82.80	60.96	78.74
60	95.50	73.66	91.44
64	100.58	78.74	96.72

UNLESS TOLERANCE	
GENERAL	ANGLE
X ± 0.30	X° ± 3.0°
.X ± 0.20	.X° ± 2.0°
.XX ± 0.15	.XX° ± 1.0°
.XXX ± 0.08	.XXX° ± 0.5°



UNLESS TOLERANCE	DRAW BY	SCALE	SHEET	UNIT
GENERAL	DESIGN BY	1:1	1/1	MM
CHECK BY	CHECK BY			
APPROVE BY	APPROVE BY			

CnC Tech, LLC

Part No.
3010-XX-003-11-99

Draw No.: REV: A